



H O M E D : I N

18 Station Road, Southwater, RH13 9HQ



Thirlmere Road

Ifield, Crawley, RH11 0ST

Offers Over £365,000



Thirlmere Road



Description

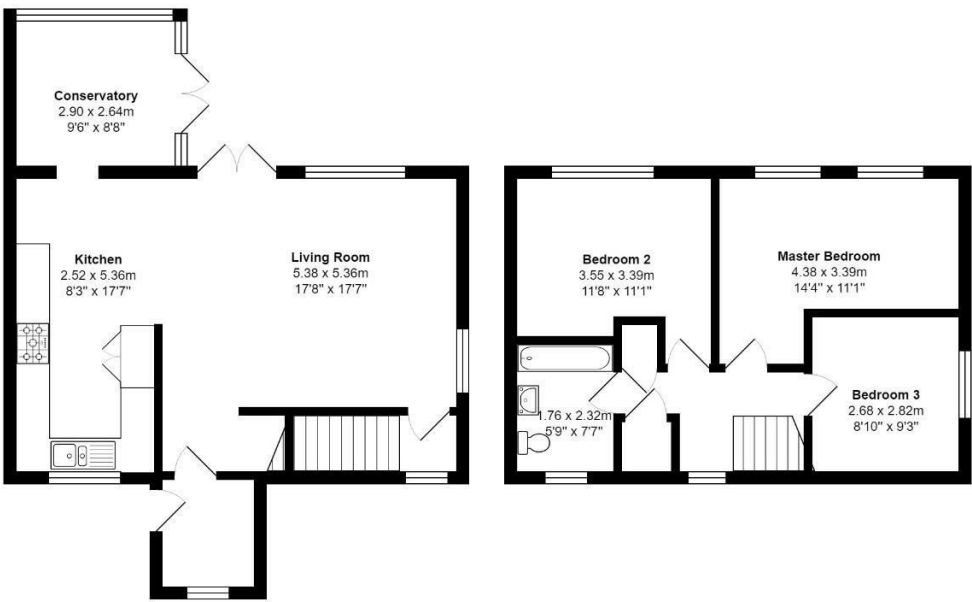
A brilliantly upgraded and modern family home with open plan living in Ifield. Video tour in tab. Book your viewing today.

- *UNDER OFFER WITHIN 3 DAYS OF MARKETING*
- Recently Upgraded/Extended
- Driveway for 2 Cars
- Quiet Cul de Sac
- 3 Good Sized Bedrooms
- Sunny, Private Garden
- VIDEO TOUR IN TAB OR AT OUR WEBSITE
- 1,060 sq ft in Size!
- Book your Viewing Today





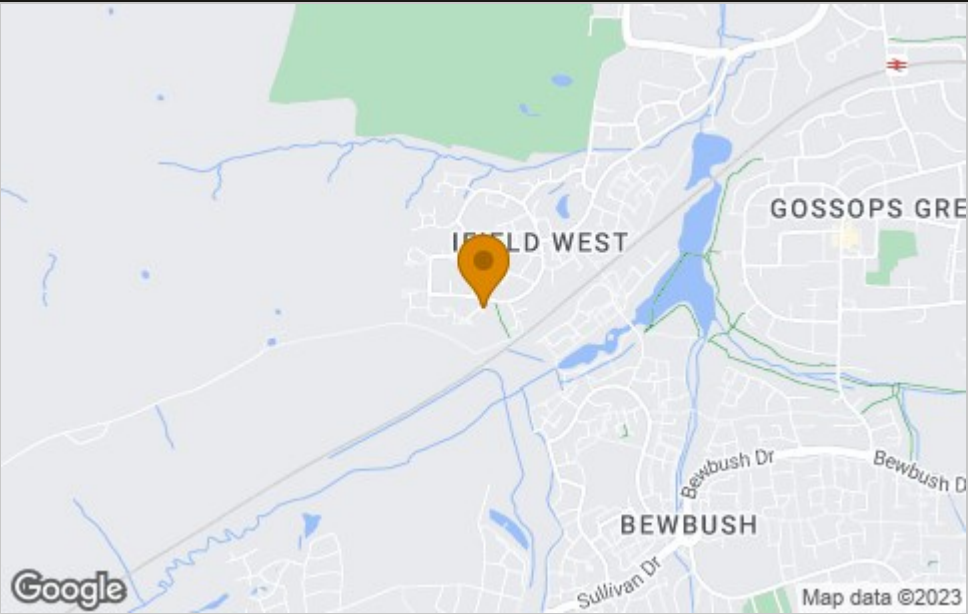
Floor Plan



Total Area: 98.4 m² ... 1060 ft²

All measurements are approximate and for display purposes only.
Copyright 2022. All rights reserved.

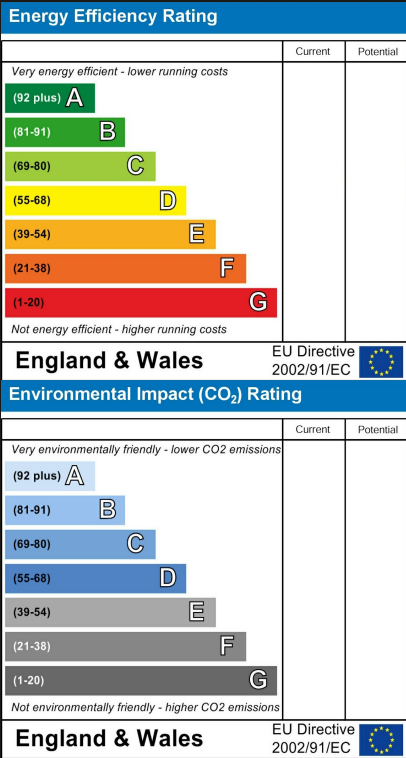
Area Map



Viewing

Please contact our Horsham Office on 01403 597595 if you wish to arrange a viewing appointment for this property or require further information.

Energy Efficiency Graph



These particulars, whilst believed to be accurate are set out as a general outline only for guidance and do not constitute any part of an offer or contract. Intending purchasers should not rely on them as statements of representation of fact, but must satisfy themselves by inspection or otherwise as to their accuracy. No person in this firm's employment has the authority to make or give any representation or warranty in respect of the property.

To **GET A FREE VALUATION** Call us on: **01403 597595**
or email us at: info@homedin.co.uk